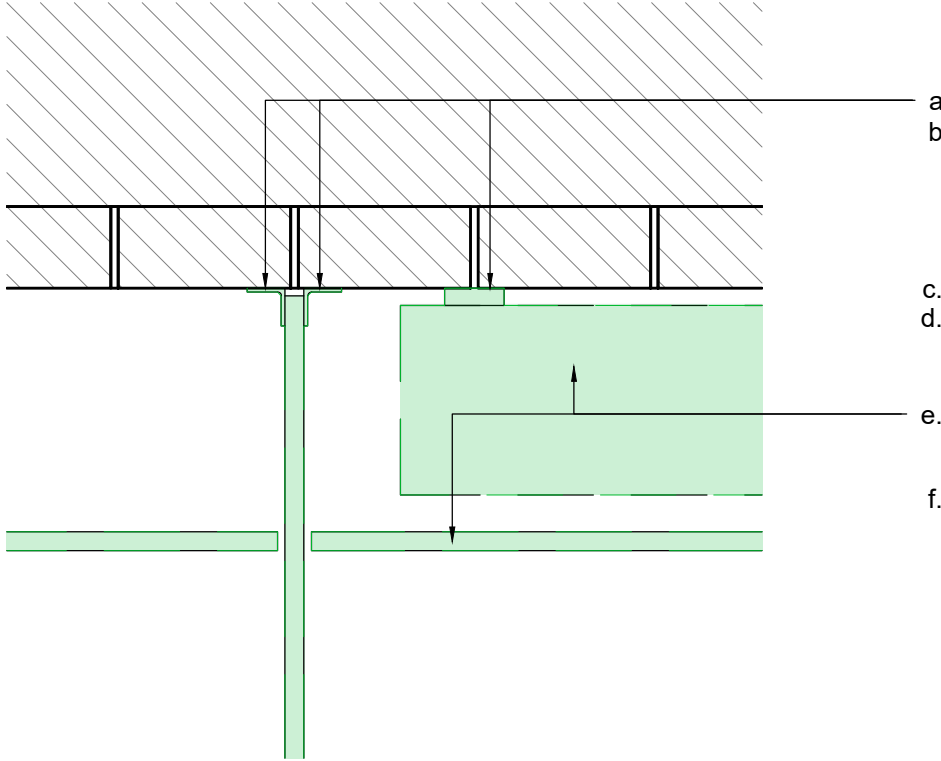
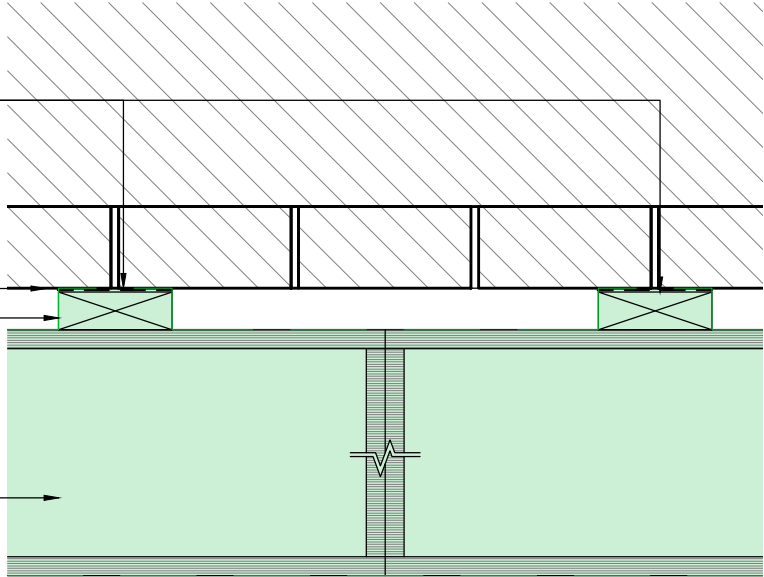


1 Plan view - Removals and alterations - plan view
3030 1:10



2 Detail plan view - Fixing detail of WC stall to historic fabric
3030 1:10



3 Fixing detail of built-in joinery to historic fabric
3030 1:10

NB
To be read in conjunction
with Jamie Fobert Architects'
information

Key

Interface with new fabric and cupboard

- Fabric to be carefully removed or altered
- New fabric by others - refer to Jamie Fobert Architects' design information

- Modern fittings carefully removed. Finishes and drained cavity waterproofing membrane sensitively stripped back to reveal bare brickwork.
- Previous fixings to be made good, generally in mortar to match existing. Subject to mortar analysis during strip-out.
 - Holes drilled into historic fabric with non-percussive diamond tipped drill.
 - Wall plug to suit installed within fixing hole to SE specification
 - Separating membrane
 - Timber fillet scribed to wall if required
 - Built-in bathroom cubicles and concealed cisterns to Jamie Fobert Architects' design
 - Built-in joinery to Jamie Fobert Architects' design

Notes:

Drawings are based on survey data and may not accurately represent what is physically present.

Do not scale from this drawing. All dimensions are to be verified on site before proceeding with the work.

All dimensions are in millimetres unless noted otherwise.

Purcell shall be notified in writing of any discrepancies.

All digital information within this DWG format file is the copyright of Purcell Architecture Limited and is for information purposes only. No digital information maybe reused or reproduced by any party for any purpose without written permission.

Key Plan
not to scale

P05	17.10.2025	RP	KSH	TENDER DRAFT
P04	18.07.2025	KSH	JMcK	STAGE 4B - FOR APPROVAL
P03	27.06.2025	KSH	JMcK	STAGE 4B - FOR INFORMATION
P02	13.06.2025	KSH	JMcK	STAGE 4B - FOR INFORMATION
P01	08.04.2025	KSH	JMcK	FOR INFORMATION
REV	DATE	BY	CHK	DESCRIPTION

CLIENT

Historic Royal Palaces

PROJECT

Tower of London Education Facilities

JOB NUMBER

243442

TITLE

Conservation Repairs & Works to Historic Fabric

Detail 03 - Fixing details of cupboards to historic fabric

SIZE SCALE

A3L 1:10

REV SUITABILITY/REASON FOR ISSUE

P05 S4 - FOR APPROVAL

DRAWING NUMBER

243442-PUR-01-XX-DR-A-3030

PURCELL® IS THE REGISTERED TRADE NAME FOR PURCELL ARCHITECTURE LTD AND ALL SUBSIDIARY COMPANIES AND IS REGISTERED IN THE UNITED KINGDOM, EUROPEAN UNION, HONG KONG, CHINA AND AUSTRALIA.
© PURCELL 2025. www.purcella.com